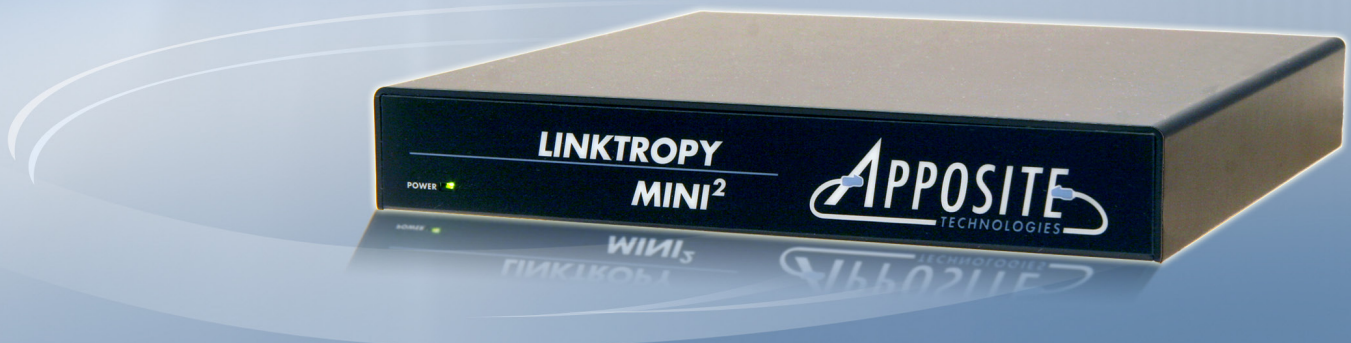


## Linktropy® Mini2 WAN Emulator



Apposite® Technologies makes it easy to test the performance of applications over the wide-area network by offering high-precision network emulation appliances that combine unmatched ease-of-use with unbeatable prices.

The Linktropy Mini<sup>2</sup> from Apposite Technologies is a portable, low cost, easy-to-use WAN emulator, designed to emulate basic network conditions for application development and customer demonstrations of networking products.

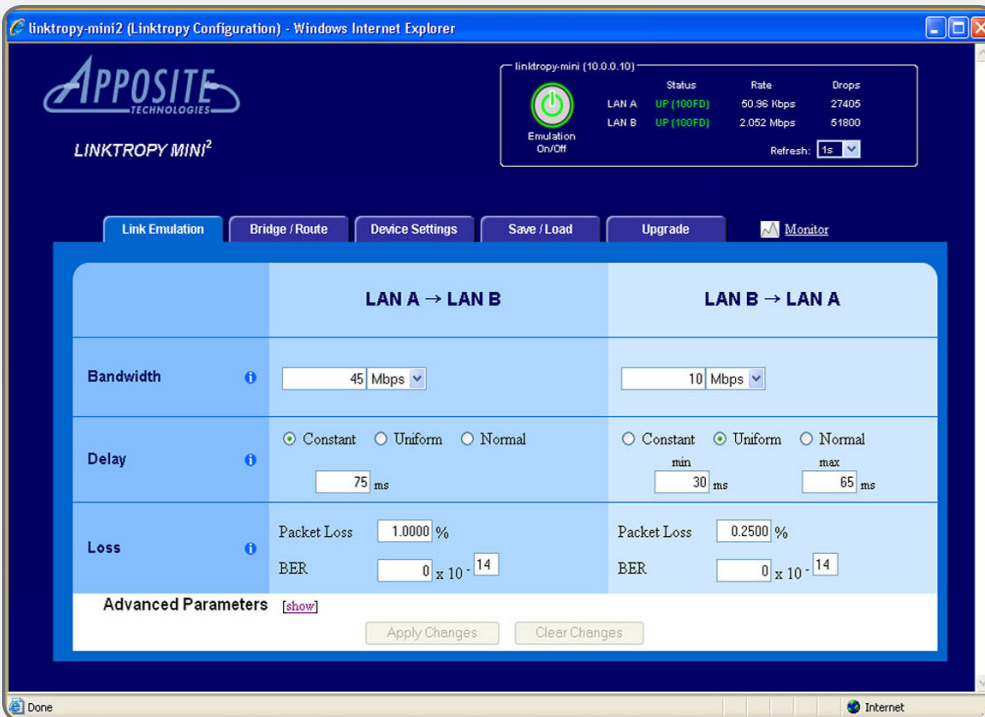
The Linktropy Mini<sup>2</sup> emulates bandwidth, latency, and loss separately in each direction for links up to 100 Mbps. Its small size and light weight make it easy to carry, while its fanless design and solid-state storage offer silent operation with high reliability.

An intuitive, browser-based interface makes installation and configuration of the Linktropy Mini<sup>2</sup> quick and easy. A real-time traffic monitor displays throughput graphs and statistics, revealing the effects of WAN conditions on application performance. For product demonstrations, the GUI allows an audience to grasp the test conditions at a glance and even adjust the parameters themselves, then quickly view the results.

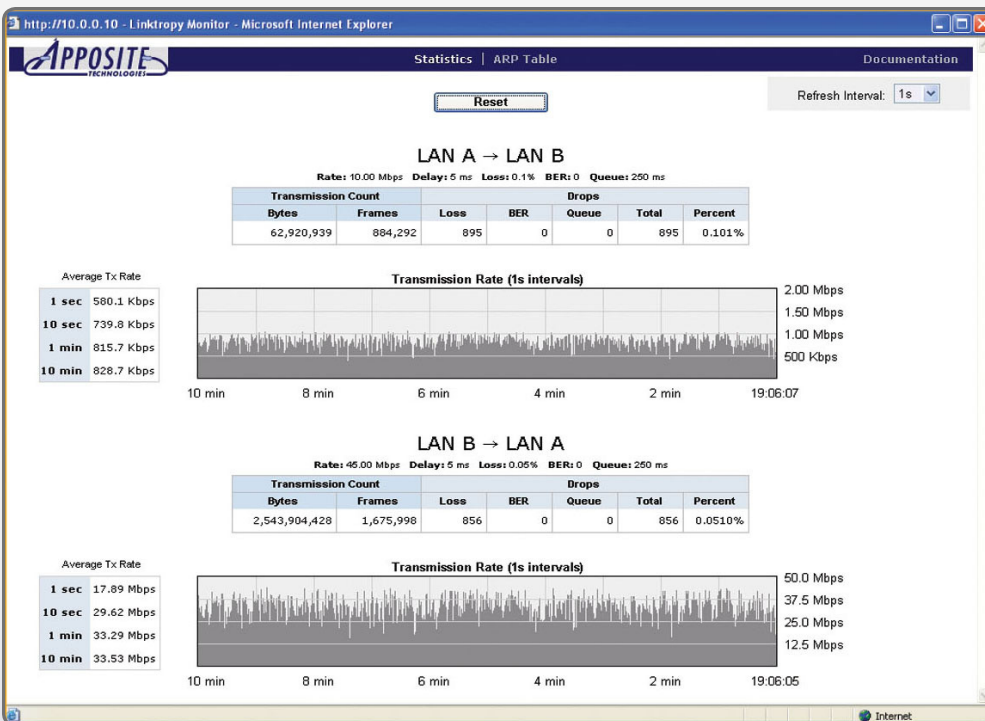
### Simulate

- Bandwidth
- Latency & Jitter
- Loss

# User Interface



Mini<sup>2</sup> Configuration Window



Mini<sup>2</sup> Monitor Window

# Features

**Easy to Use:** The Mini<sup>2</sup> is a snap to install and configure. Just plug in the Ethernet cables, specify the link conditions, and begin testing. No software to install, no training needed.

**Bandwidth up to 100 Mbps:** Emulate links of up to 100 Mbps in each direction.

**Delay up to 10 seconds:** Emulate latency from 1 ms. up to 10 sec. in each direction in a constant, normal, or uniform distribution.

**Error Emulation:** Specify loss as a packet loss rate, bit error rate, or both.

**Emulate any WAN:** Emulate terrestrial, wireless, internet, satellite or any other type of wide area network.

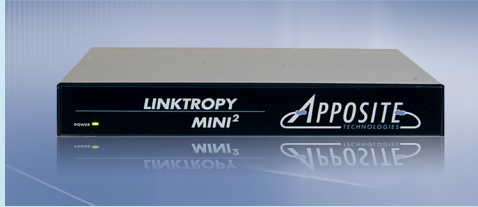
**Traffic Monitor:** See a visual display of the current traffic, including throughput graphs and link statistics.

**Bridging/Routing:** Install the Mini<sup>2</sup> as either a bridge or router.

**Portable:** Carry the Linktropy Mini<sup>2</sup> with you. Its small size and light weight make it easy to take wherever you travel.

**Everything You Need:** Everything you need to emulate a WAN is included in the compact Linktropy Mini<sup>2</sup>. No additional hardware or software required.

## Linktropy Family



The Mini<sup>2</sup> is a portable, low cost version of the Linktropy product family. The Mini<sup>2</sup> is specifically designed for customer demonstrations of networking products by sales professionals, sales engineers, and product resellers. It is also handy for basic product testing during application development.

For more comprehensive product testing and high-precision benchmarking, Aposite offers the Linktropy 5500, 7500 PRO, and 10G models built with the high level of precision, performance, and functionality required by network managers, IT staff, product developers, customer support, and QA teams.



## Linktropy Model

Linktropy Model	Mini2	5500	7500 PRO	10G
<b>Capacity</b>				
Max. Emulation Speed	100 Mbps	1 Gbps	1 Gbps 4 Gbps aggregate	10 Gbps 22 Gbps aggregate
Emulated Links	1 link	1 link	4 links	3 links
Maximum Packet Rate	80,000	1 million	3 million	10 million
Test Lab Level Precision	✗	✓	✓	✓
<b>Link Impairments</b>				
Bandwidth	✓	✓	✓	✓
Latency	✓	✓	✓	✓
Packet Loss	✓	✓	✓	✓
Bit Errors	✓	✓	✓	✓
Background Traffic	✗	✓	✓	✓
Live Condition Capture and Replay	✗	✓	✓	✓
Packet Reordering	✗	✓	✓	✓
Packet Duplication	✗	✓	✓	✓
Linktropy Scheduler	✗	✓	✓	✓
<b>Installation and Operation</b>				
Statistics Download	✗	✓	✓	✓
Install As Bridge	✓	✓	✓	✓
Install As Router	✓	✓	✓	✓
Jumbo Frames	✗	✓	✓	✓
SSL, SSH Support	✗	✓	✓	✓
Full CLI	✗	✓	✓	✓
Emulation Interfaces	2 10/100 FE	2 GigE	4 copper, 4 SFP	4 x 10 GigE, 2 x GigE
Form Factor	Portable (6" x 6")	1U	1U	2U
Warranty	1 year	1 year	1 year	1 year
Customer Support	90 days	1 year	1 year	1 year

## Specifications

<b>Performance</b>	
Capacity	100 Mbps full duplex, 80,000 packets per second
<b>Emulation Settings</b>	
Bandwidth	300 bps - 100 Mbps in 1 bps increments
Delay	0 ms. - 10 sec. in 0.1 ms. increments; constant, uniform, normal distributions
Packet Loss Rate	0 - 100% in increments of 0.0001%
Additional Parameters	Bit Error Rate, Queue Depth, Framing Overhead
<b>Interfaces</b>	
Emulation	2 x 10/100baseT Ethernet
Management	1 x 10/100baseT Ethernet, 1 x RS-232 serial console
<b>Physical</b>	
Weight	1.1 lbs (0.5 kg)
Dimensions	6.2" W x 6.3" D x 1.1" H (158 mm x 160 mm x 28 mm)
Power Input	7 - 20V DC power, 0.1 A, 6 Watts

## About Apposite Technologies

Apposite Technologies makes WAN emulation easy by offering professional-quality network emulation tools at affordable prices. Apposite's Netropy and Linktropy WAN emulation appliances simulate bandwidth, latency, loss, congestion, and other network impairments with fine-grained precision to provide accurate simulations of any type of wide-area network. Netropy and Linktropy WAN emulators are widely deployed by leading enterprises, application and equipment developers, telecoms carriers, and government and military organizations around the world.

### Apposite Technologies – WAN Emulation Made Easy

#### Apposite Technologies, Inc.

11500 W. Olympic Blvd., Suite 510  
Los Angeles, CA 90064 USA  
www.apposite-tech.com

tel: 1.310.477.9955  
fax: 1.310.477.9956  
info@apposite-tech.com

